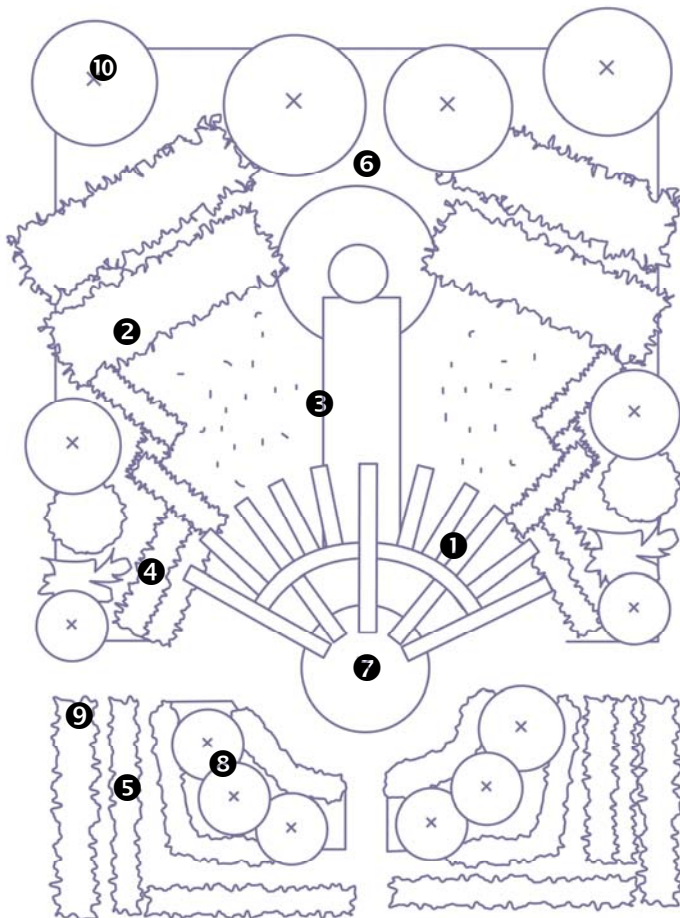


Formal Garden

When you picture a formal garden, normally you wouldn't think of a garden planted entirely with native plants. This garden demonstrates that you can achieve a formal look even when using plants that have all been propagated from Redlands' bushland areas. By placing plants in geometric patterns such as straight lines, triangles and circles and pruning shrubs into rounded topiary, square hedges and geometric shapes, you too can create a formal native garden. A mirrored design, so that one side of the garden is exactly the same as the other side is another way to get a formal look.

Most of the plants in this garden occur naturally in rainforest or wetter environments where plants produce dark green, glossy leaves. The dense foliage style in many of the species used provides an excellent home for wildlife while still allowing for spectacular flowering and fruiting.

Most plants will tolerate pruning and it is one way to extend the life of plants as well as improve their shape. A regular light prune is more effective for shaping than lopping once a year. Hedging and shaping of plants needs to start early in the life of the plant and continue frequently. The six local species of Lilly-pilly are perfect for shaping and hedging. A formal garden, even a native one, will still need more regular care than other native gardens.



Species in the garden



***Pandorea pandorana* ①** **Wonga Vine**

This woody vine produces masses of cream tubular flowers that have throats spotted with maroon. It will quickly grow to the top of a tree or a fence and here it has been trained over the pergola.



***Geitnoplesium cymosum* ②** **Scrambling Lily**

A wiry vine with robust stems and shiny green leaves. Lily-like flowers are white followed by bunches of shiny black berries. Grows naturally in rainforest or wet situations, usually in semi-shade.



***Hibbertia aspera* ③** **Guinea Flower**

A small shrub, rarely reaching 50cm in height, but will spread further. Shiny green leaves make for a nice matting effect punctuated by small bright yellow flowers for most of the year. Will grow in sun or shade and is hardy once established.



***Austromyrtus dulcis* ④** **Midyim Berry**

A low-growing shrub that will cope well with in fairly heavy shade but also tolerates full sun provided it has sufficient moisture. Delightful fluffy-white flowers in November are followed by edible berries in autumn.



Alpinia caerulea **Native Ginger**

Attractive rainforest herb to 1.5m that prefers a moist site with at least partial shade. The heads of white tubular flowers are followed by clusters of edible blue fruits. The root tips are also edible. A great plant for a shady understory.



***Syzygium australe* ⑤** **Creek Lilly-pilly**

An ornamental rainforest tree that grows to about 15m and has pink or red edible berries. A great tree for shaping and hedging.



Cordyline petiolaris **Broad-leaved Palm-lily**

An upright shrub to 3m but can be taller in very good conditions. It is hardy in most soils and conditions but prefers semi-shade with regular water, particularly in summer. It has purple flowers followed by bright red berries.



***Tasmannia insipida* ⑥** **Pepper Bush**

A rainforest shrub to 2m, one of the few shrubs that will grow well in full shade. It has attractive foliage and small, cream flowers at the end of the stalks. These are followed by edible fleshy fruits that vary from white to purple.



***Elaeocarpus reticulatus* ⑦** **Blueberry Ash**

Attractive small tree to 6m with some reddish foliage and beautiful white flowers. Hard blue fruits persist on the tree for many months. Quite hardy and can be pruned to shape.



***Syzygium luehmannii* ⑧** **Small-leaved Lilly-pilly**

A rainforest tree that grows as a shrub in cultivation and can be pruned to most sizes while still maintaining dense growth. New foliage is very pink, providing a show of colour in late winter/early spring. An excellent plant for larger pots and also for a dense native hedge.



***Acmena hemilampra* ⑨** **Broad-leaved Lilly-pilly**

Attractive small tree to 8m with nice shape and foliage, larger than other lilly-pillies. White flowers are followed by edible white fruit. New growth is red-orange. Hardy, but will prefer a sheltered site.



***Callitris columellaris* ⑩** **Bribie Island Pine**

A fine leaved native cypress that can grow to 20m near the coast on sandy soils. Foliage is green and it bears small cones. Can be used as a screen plant or shaped in a formal garden to form a dense hedge.

Some other species to consider

Trees		Herbs, small plants	
<i>Cryptocarya microneura</i>	Glossy Laurel	<i>Crinum pedunculatum</i>	River Lily
<i>Eucalyptus tereticornis</i>	Qld Blue Gum	<i>Jasminium simplicifolium</i>	Native Jasmine
<i>Podocarpus elatus</i>	Brown Pine	<i>Lomandra hystrix</i>	Creek Mat Rush
<i>Syzygium oleosum</i>	Blue Lilly-pilly	<i>Viola hederacea</i>	Native Violet
Shrubs		Vines & Creepers	
<i>Backhousia myrtifolia</i>	Carrol	<i>Cissus antarctica</i>	Native Grape
<i>Hakea actites</i>	Wallum Hakea	<i>Geitnoplesium cymosum</i>	Scrambling Lily
<i>Petalostigma pubescens</i>	Quinine Tree	<i>Pandorea jasminoides</i>	Bower-of-Beauty
<i>Westringia eremicola</i>	Slender Westringia	<i>Stephania japonica</i>	Tape Vine